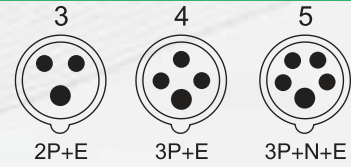
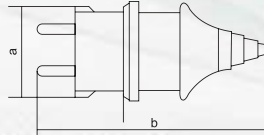


INDUSTRIAL PLUG & SOCKET

INDUSTRIAL PLUG



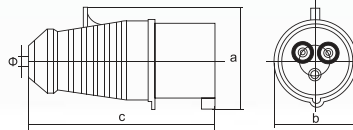
Application	Code	Normal Current	Normal Voltage	No.poles	Protection Degree
Plug	JG-012	16A	220-250V~	2P+E	IP44



Size(mm)	a	b	Cable nominal cross section area
JG-012	40	96	1-2.5mm ²



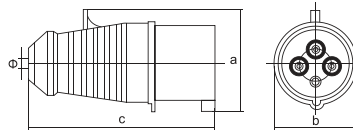
Application	Code	Normal Current	Earth contact Position	Normal Voltage	No.poles	Protection Degree
Plug	JG-013	16A	6h	220-250V~	2P+E	IP44
Plug	JG-023	32A	6h	220-250V~	2P+E	IP44



Size(mm)	a	b	c	Φ	Cable nominal cross section area
JG-013	59	51	122	6	1-2.5mm ²
JG-023	75	64	136	8	2.5-6mm ²



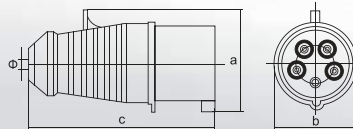
Application	Code	Normal Current	Earth contact Position	Normal Voltage	No.poles	Protection Degree
Plug	JG-014	16A	6h	380-415V~	3P+E	IP44
Plug	JG-024	32A	6h	380-415V~	3P+E	IP44



Size(mm)	a	b	c	Φ	Cable nominal cross section area
JG-014	65	55	122	6	1-2.5mm ²
JG-024	75	64	136	8	2.5-6mm ²



Application	Code	Normal Current	Earth contact Position	Normal Voltage	No.poles	Protection Degree
Plug	JG-015	16A	6h	220-380V~ 240-415V~	3P+N+E	IP44
Plug	JG-025	32A	6h	220-380V~ 240-415V~	3P+N+E	IP44

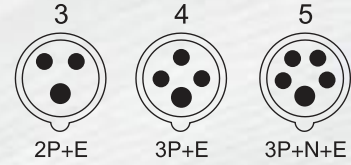


Size(mm)	a	b	c	Φ	Cable nominal cross section area
JG-015	72	64	130	8	1-2.5mm ²
JG-025	84	70	143	8	2.5-6mm ²

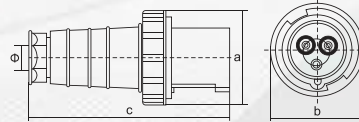


INDUSTRIAL PLUG & SOCKET

INDUSTRIAL PLUG



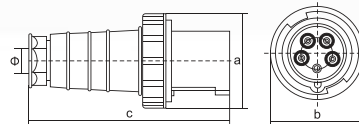
Application	Code	Normal Current	Earth contact Position	Normal Voltage	No.poles	Protection Degree
Plug	JG-033	63A	6h	220-250V~	2P+E	IP67
Plug	JG-043	125A	6h	220-250V~	2P+E	IP67



Size(mm)		a	b	c	Φ	Cable nominal cross section area
Type						
	JG-033/043	108	108	230	16	6-16mm ²



Application	Code	Normal Current	Earth contact Position	Normal Voltage	No.poles	Protection Degree
Plug	JG-035	63A	6h	220-380V~ 240-415V~	3P+N+E	IP67
Plug	JG-045	125A	6h	220-380V~ 240-415V~	3P+N+E	IP67

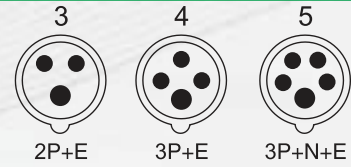


Size(mm)		a	b	c	Φ	Cable nominal cross section area
Type						
	JG-035/045	108	108	230	16	6-16mm ²

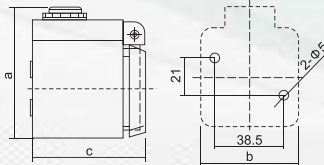


INDUSTRIAL PLUG & SOCKET

INDUSTRIAL WALL SOCKETS



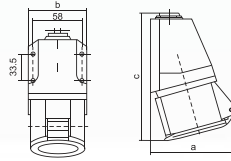
Application	Code	Normal Current	Normal Voltage	No.poles	Protection Degree
Socket	JG-112	16A	220-250V~	2P+E	IP44



Size(mm)	a	b	c	Cable nominal cross section area
JG-112	70	53	67	1-2.5mm ²



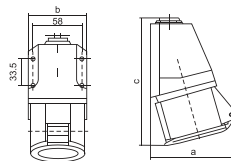
Application	Code	Normal Current	Earth contact Position	Normal Voltage	No.poles	Protection Degree
Socket	JG-113	16A	6h	220-250V~	2P+E	IP44
Socket	JG-123	32A	6h	220-250V~	2P+E	IP44



Size(mm)	a	b	c	Cable nominal cross section area
JG-113	90	71	135	1-2.5mm ²
JG-123	100	71	151	2.5-6mm ²



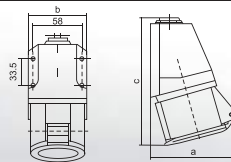
Application	Code	Normal Current	Earth contact Position	Normal Voltage	No.poles	Protection Degree
Socket	JG-114	16A	6h	380-415V~	3P+E	IP44
Socket	JG-124	32A	6h	380-415V~	3P+E	IP44



Size(mm)	a	b	c	Cable nominal cross section area
JG-114	92	71	140	1-2.5mm ²
JG-124	102	71	151	2.5-6mm ²



Application	Code	Normal Current	Earth contact Position	Normal Voltage	No.poles	Protection Degree
Socket	JG-115	16A	6h	220-380V~ 240-415V~	3P+N+E	IP44
Socket	JG-125	32A	6h	220-380V~ 240-415V~	3P+N+E	IP44

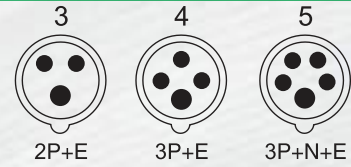


Size(mm)	a	b	c	Cable nominal cross section area
JG-115	100	71	131	1-2.5mm ²
JG-125	109	71	152	2.5-6mm ²

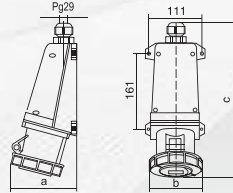


INDUSTRIAL PLUG & SOCKET

INDUSTRIAL WALL SOCKETS



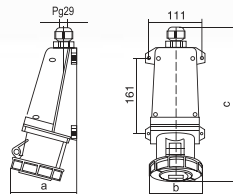
Application	Code	Normal Current	Earth contact Position	Normal Voltage	No.poles	Protection Degree
Socket	JG-133	63A	6h	220-250V~	2P+E	IP67
Socket	JG-143	125A	6h	220-250V~	2P+E	IP67



Size(mm) Type	a	b	c	Cable nominal cross section area
	JG-133/143	133	108	



Application	Code	Normal Current	Earth contact Position	Normal Voltage	No.poles	Protection Degree
Socket	JG-135	63A	6h	220-380V~ 240-415V~	3P+N+E	IP67
Socket	JG-145	125A	6h	220-380V~ 240-415V~	3P+N+E	IP67

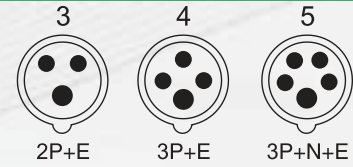


Size(mm) Type	a	b	c	Cable nominal cross section area
	JG-135/145	133	108	

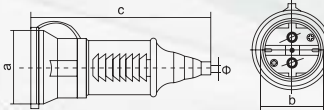


INDUSTRIAL PLUG & SOCKET

INDUSTRIAL STRAIGHT SOCKETS



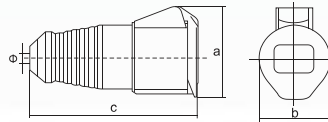
Application	Code	Normal Current	Normal Voltage	No.poles	Protection Degree
Coupler	JG-212	16A	220-250V~	2P+E	IP44



Size(mm)	a	b	c	Cable nominal cross section area
Type				
JG-212	72	48	123	1-2.5mm ²



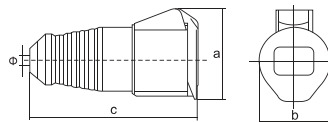
Application	Code	Normal Current	Earth contact Position	Normal Voltage	No.poles	Protection Degree
Coupler	JG-213	16A	6h	220-250V~	2P+E	IP44
Coupler	JG-223	32A	6h	220-250V~	2P+E	IP44



Size(mm)	a	b	c	Φ	Cable nominal cross section area
Type					
JG-213	72	51	132	6	1-2.5mm ²
JG-223	92	64	146	8	2.5-6mm ²



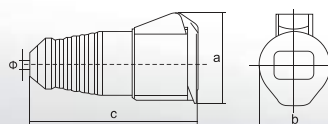
Application	Code	Normal Current	Earth contact Position	Normal Voltage	No.poles	Protection Degree
Coupler	JG-214	16A	6h	380-415V~	3P+E	IP44
Coupler	JG-224	32A	6h	380-415V~	3P+E	IP44



Size(mm)	a	b	c	Φ	Cable nominal cross section area
Type					
JG-214	78	55	132	6	1-2.5mm ²
JG-224	92	64	146	8	2.5-6mm ²



Application	Code	Normal Current	Earth contact Position	Normal Voltage	No.poles	Protection Degree
Coupler	JG-215	16A	6h	220-380V~ 240-415V~	3P+N+E	IP44
Coupler	JG-225	32A	6h	220-380V~ 240-415V~	3P+N+E	IP44

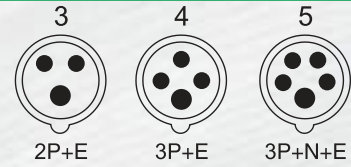


Size(mm)	a	b	c	Φ	Cable nominal cross section area
Type					
JG-215	92	63	139	6	1-2.5mm ²
JG-225	101	70	154	8	2.5-6mm ²

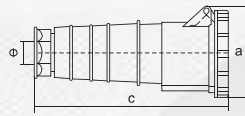


INDUSTRIAL PLUG & SOCKET

INDUSTRIAL STRAIGHT SOCKETS



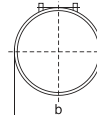
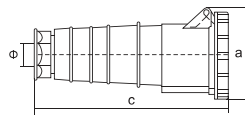
Application	Code	Normal Current	Earth contact Position	Normal Voltage	No.poles	Protection Degree
Coupler	JG-233	63A	6h	220-250V~	2P+E	IP67
Coupler	JG-243	125A	6h	220-250V~	2P+E	IP67



Size(mm)	a	b	c	Cable nominal cross section area
Type				
JG-233/243	116	108	245	6-16mm ²



Application	Code	Normal Current	Earth contact Position	Normal Voltage	No.poles	Protection Degree
Coupler	JG-235	63A	6h	220-380V~ 240-415V~	3P+N+E	IP67
Coupler	JG-245	125A	6h	220-380V~ 240-415V~	3P+N+E	IP67

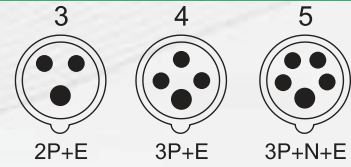


Size(mm)	a	b	c	Cable nominal cross section area
Type				
JG-235/245	116	108	245	6-16mm ²

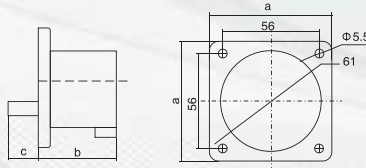


INDUSTRIAL PLUG & SOCKET

INDUSTRIAL REV PLUG



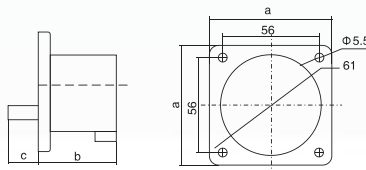
Application	Code	Normal Current	Earth contact Position	Normal Voltage	No.poles	Protection Degree
Plug	JG-613	16A	6h	220-250V~	2P+E	IP44
Plug	JG-623	32A	6h	220-250V~	2P+E	IP44



Size(mm)	a	b	c	Cable nominal cross section area
JG-613	70	41	24	1-2.5mm ²
JG-623	70	50	28	2.5-6mm ²



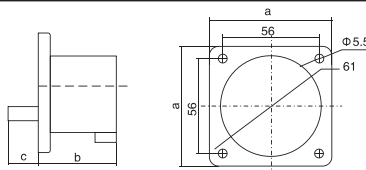
Application	Code	Normal Current	Earth contact Position	Normal Voltage	No.poles	Protection Degree
Plug	JG-614	16A	6h	380-415V~	3P+E	IP44



Size(mm)	a	b	c	Cable nominal cross section area
JG-614	70	41	24	1-2.5mm ²



Application	Code	Normal Current	Earth contact Position	Normal Voltage	No.poles	Protection Degree
Plug	JG-615	16A	6h	220-380V~ 240-415V~	3P+N+E	IP44
Plug	JG-625	32A	6h	220-380V~ 240-415V~	3P+N+E	IP44

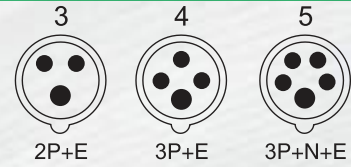


Size(mm)	a	b	c	Cable nominal cross section area
JG-615	70	41	24	1-2.5mm ²
JG-625	70	51	29	2.5-6mm ²

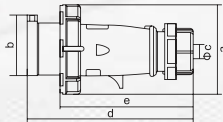


INDUSTRIAL PLUG & SOCKET

INDUSTRIAL PLUG IP 67



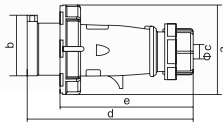
Application	Code	Normal Current	Earth contact Position	Normal Voltage	No.poles	Protection Degree
Plug	JG-0132	16A	6h	220-250V~	2P+E	IP67
Plug	JG-0232	32A	6h	220-250V~	2P+E	IP67



Size(mm)		a	b	Φc	d	e	Cable nominal cross section area
Type							
JG-0132		75.5	47	7-15	139	112	1-2.5mm ²
JG-0232		99	63	10-20	175	130	2.5-6mm ²



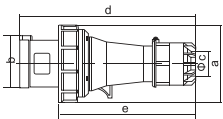
Application	Code	Normal Current	Earth contact Position	Normal Voltage	No.poles	Protection Degree
Plug	JG-0152	16A	6h	220-380V~ 240-415V~	3P+N+E	IP67
Plug	JG-0252	32A	6h	220-380V~ 240-415V~	3P+N+E	IP67



Size(mm)		a	b	Φc	d	e	Cable nominal cross section area
Type							
JG-0152		92	60	8-16	139	95	1-2.5mm ²
JG-0252		107	70	12-22	170	124	2.5-6mm ²



Application	Code	Normal Current	Earth contact Position	Normal Voltage	No.poles	Protection Degree
Plug	JG-0352	63A	6h	220-380V~ 240-415V~	3P+N+E	IP67

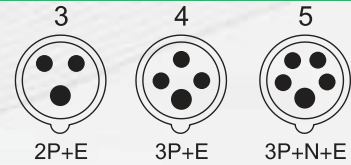


Size(mm)		a	b	Φc	d	e	Cable nominal cross section area
Type							
JG-0352		116	75	37	251	187	6-16mm ²

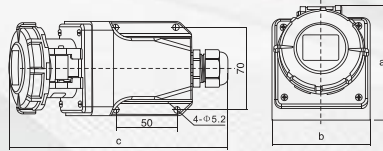


INDUSTRIAL PLUG & SOCKET

INDUSTRIAL WALL SOCKET IP 67



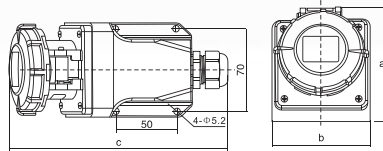
Application	Code	Normal Current	Earth contact Position	Normal Voltage	No.poles	Protection Degree
Socket	JG-1132	16A	6h	220-250V~	2P+E	IP67
Socket	JG-1232	32A	6h	220-250V~	2P+E	IP67



Type	Size(mm)			Cable nominal cross section area
	a	b	c	
JG-1132	95	75	193	1-2.5mm ²
JG-1232	105	75	203	2.5-6mm ²



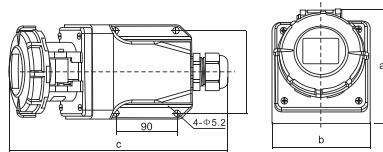
Application	Code	Normal Current	Earth contact Position	Normal Voltage	No.poles	Protection Degree
Socket	JG-1152	16A	6h	220-380V~ 240-415V~	3P+N+E	IP67
Socket	JG-1252	32A	6h	220-380V~ 240-415V~	3P+N+E	IP67



Type	Size(mm)			Cable nominal cross section area
	a	b	c	
JG-1152	100	75	185	1-2.5mm ²
JG-1252	105	75	200	2.5-6mm ²



Application	Code	Normal Current	Earth contact Position	Normal Voltage	No.poles	Protection Degree
Socket	JG-1352	63A	6h	220-380V~ 240-415V~	3P+N+E	IP67

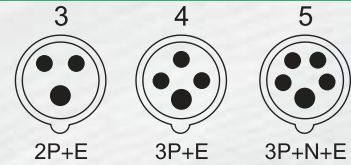


Type	Size(mm)			Cable nominal cross section area
	a	b	c	
JG-1352	130	105	275	10-16mm ²

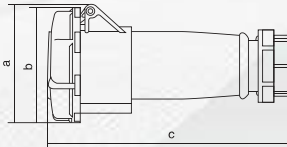


INDUSTRIAL PLUG & SOCKET

INDUSTRIAL STRAIGHT SOCKET IP 67



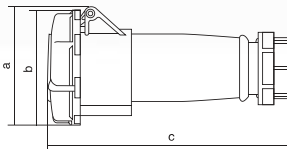
Application	Code	Normal Current	Earth contact Position	Normal Voltage	No.poles	Protection Degree
Coupler	JG-2132	16A	6h	220-250V~	2P+E	IP67
Coupler	JG-2232	32A	6h	220-250V~	2P+E	IP67



Size(mm) Type	a	b	c	Cable nominal cross section area
	JG-2132	79	77	
JG-2232	102	102	205	2.5-6mm ²



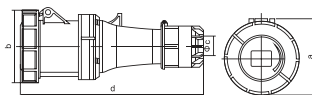
Application	Code	Normal Current	Earth contact Position	Normal Voltage	No.poles	Protection Degree
Coupler	JG-2152	16A	6h	220-380V~ 240-415V~	3P+N+E	IP67
Coupler	JG-2252	32A	6h	220-380V~ 240-415V~	3P+N+E	IP67



Size(mm) Type	a	b	c	Cable nominal cross section area
	JG-2152	97	90	
JG-2252	109	103	210	2.5-6mm ²



Application	Code	Normal Current	Earth contact Position	Normal Voltage	No.poles	Protection Degree
Coupler	JG-2352	63A	6h	220-380V~ 240-415V~	3P+N+E	IP67

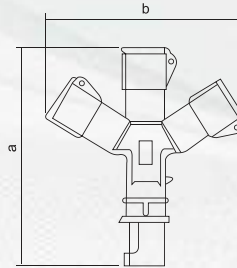
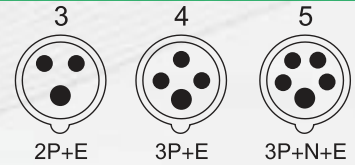


Size(mm) Type	a	b	c	d	Cable nominal cross section area
	JG-2352	114	117	37	

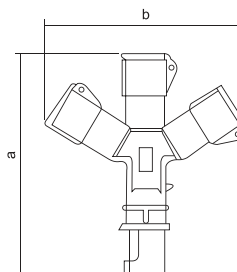


INDUSTRIAL PLUG & SOCKET

MULTI-FUNCTION PLUG & SOCKET CONNECTOR



Code	Normal Current	Earth Contact Position	Normal Voltage	No.poles	Protection Degree	Size(mm)	
						a	b
JG-1013	16A	6h	220-240V~	2P+E	IP44	223	220
JG-1023	32A	6h	220-240V~	2P+E	IP44	318	305

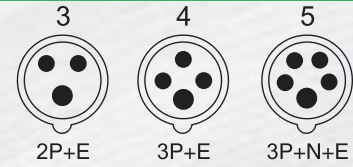


Code	Normal Current	Earth Contact Position	Normal Voltage	No.poles	Protection Degree	Size(mm)	
						a	b
JG-1015	16A	6h	220-380V~ 240-415V~	3P+N+E	IP44	305	295

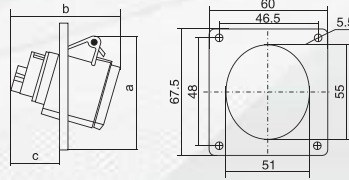


INDUSTRIAL PLUG & SOCKET

ANGULAR PLUG & SOCKET



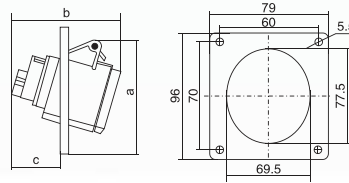
Application	Code	Normal Current	Earth contact Position	Normal Voltage	No.poles	Protection Degree
Socket	JG-413	16A	6h	220-250V~	2P+E	IP44



Size(mm)	a	b	c	Cable nominal cross section area
Type				
ZZ-413	74	72	45	1-2.5mm ²



Application	Code	Normal Current	Earth contact Position	Normal Voltage	No.poles	Protection Degree
Socket	JG-425	32A	6h	220-380V~ 240-415V~	3P+N+E	IP44

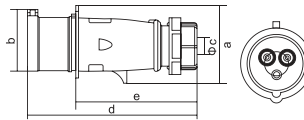


Size(mm)	a	b	c	Cable nominal cross section area
Type				
ZZ-425	102	95	51	2.5-6mm ²

3RD GENERATION INDUSTRIAL PLUG



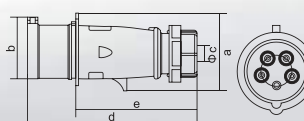
Application	Code	Normal Current	Earth contact Position	Normal Voltage	No.poles	Protection Degree
Plug	JG-013X	16A	6h	220-250V~	2P+E	IP44
Plug	JG-023X	32A	6h	220-250V~	2P+E	IP44



Size(mm)	a	b	Φc	d	e	Cable nominal cross section area
Type						
JG-013X	58	47	7-15	135	104	1-2.5mm ²
JG-023X	80.7	63	10-20	171	130	2.5-6mm ²



Application	Code	Normal Current	Earth contact Position	Normal Voltage	No.poles	Protection Degree
Plug	JG-015X	16A	6h	220-380V~ 240-415V~	3P+N+E	IP44
Plug	JG-025X	32A	6h	220-380V~ 240-415V~	3P+N+E	IP44



Size(mm)	a	b	Φc	d	e	Cable nominal cross section area
Type						
JG-015X	75	60	8-16	145	112	1-2.5mm ²
JG-025X	89	70	12-22	178	132	2.5-6mm ²

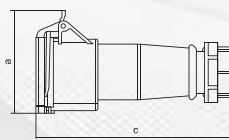


INDUSTRIAL PLUG & SOCKET

3RD GENERATION INDUSTRIAL STRAIGHT SOCKET



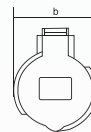
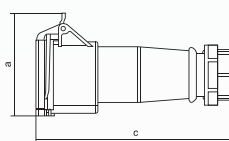
Application	Code	Normal Current	Earth contact Position	Normal Voltage	No.poles	Protection Degree
Coupler	JG-213X	16A	6h	220-250V~	2P+E	IP44
Coupler	JG-223X	32A	6h	220-250V~	2P+E	IP44



Size(mm) Type	a	b	c	Cable nominal cross section area
	JG-213X	83	60	
JG-223X	102	82.5	195	2.5-6mm ²



Application	Code	Normal Current	Earth contact Position	Normal Voltage	No.poles	Protection Degree
Coupler	JG-215X	16A	6h	220-380V~ 240-415V~	3P+N+E	IP44
Coupler	JG-225X	32A	6h	220-380V~ 240-415V~	3P+N+E	IP44

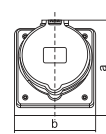
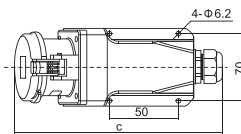


Size(mm) Type	a	b	c	Cable nominal cross section area
	JG-215X	100	76	
JG-225X	110	90	200	2.5-6mm ²

3RD GENERATION INDUSTRIAL WALL SOCKET



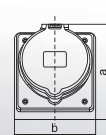
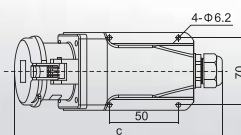
Apellation	Code	Normal Current	Earth contact Position	Normal Voltage	No.poles	Protection Degree
Socket	JG-113X	16A	6h	220-250V~	2P+E	IP44
Socket	JG-123X	32A	6h	220-250V~	2P+E	IP44



Size(mm) Type	a	b	c	Cable nominal cross section area
	JG-113X	104	80	
JG-123X	114	80	192	2.5-6mm ²



Apellation	Code	Normal Current	Earth contact Position	Normal Voltage	No.poles	Protection Degree
Socket	JG-115X	16A	6h	220-380V~ 240-415V~	3P+N+E	IP44
Socket	JG-125X	32A	6h	220-380V~ 240-415V~	3P+N+E	IP44



Size(mm) Type	a	b	c	Cable nominal cross section area
	JG-115X	110	80	
JG-125X	114	80	192	2.5-6mm ²

