

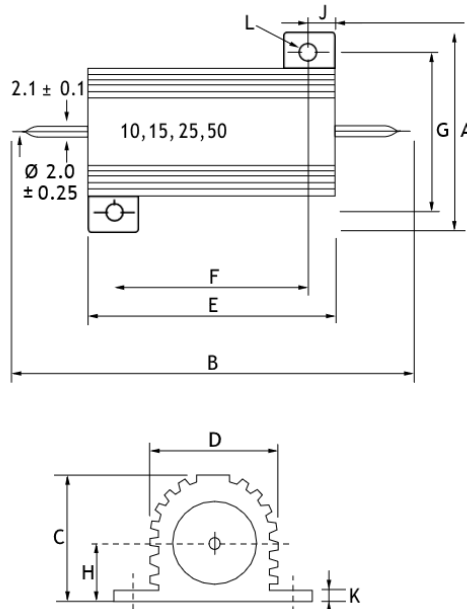
# Aluminium Housed Power Resistors

50 watt aluminium housed power resistor. Manufactured to meet the requirements. Designed for direct heatsink mounting with thermal compound to achieve maximum performance. With screw holes that can tighten the resistor against a chassis or heatsink for greater heat dissipation. Widely used in power supply, transducer, booster, arena audio and high requirement equipment industry. Aluminum shell resistance series (gold aluminum shell), the shell is made of aluminum alloy.

## Feature/Specs:

| SL.No | Parameter               | Value and Unit          |
|-------|-------------------------|-------------------------|
| 1     | Resistance Value        | 0 ~ 10K                 |
| 2     | Resistance Tolerance    | ±5%                     |
| 3     | Power Rating            | 50 Watts                |
| 4     | Resistor Wire Element   | High Grade FeCrAl Alloy |
| 5     | Temperature Coefficient | 150 PPM/ °C             |
| 6     | Ambient Temperature     | 50°C                    |
| 7     | Operating Temperature   | -55°C ~ 275°C           |

## Dimension In: mm



| Watts | A Max | B Max | C Max | D Max | E Max | F±0.3 | G±0.3 | H Max | J Max | K Max | L ±0.25* | M Max |
|-------|-------|-------|-------|-------|-------|-------|-------|-------|-------|-------|----------|-------|
| 10    | 16.5  | 30.0  | 8.8   | 8.5   | 15.9  | 11.3  | 12.4  | 4.5   | 2.4   | 1.8   | 2.4      |       |
| 15    | 21.0  | 36.5  | 11.0  | 11.2  | 19.9  | 14.3  | 15.9  | 5.5   | 2.8   | 1.8   | 2.4      |       |
| 25    | 28.0  | 51.0  | 14.6  | 14.0  | 27.3  | 18.3  | 19.8  | 7.3   | 4.7   | 2.6   | 3.2      |       |
| 50    | 29.7  | 72.5  | 14.8  | 14.2  | 49.1  | 39.7  | 21.4  | 8.5   | 5.2   | 2.6   | 3.2      |       |

\* 10-50 Watts is ± 0.45