

# SPECIFICATIONS

Customer: \_\_\_\_\_

Customer P/N: MSRH-D Series

Drawing No: \_\_\_\_\_

Quantity: 0 Pcs. Date : 2017/09/06

Chilisin P/N: MSRH-D Series

SPECIFICATION ACCEPTED BY:	
COMPONENT ENGINEER	
ELECTRICAL ENGINEER	
MECHANICAL ENGINEER	
APPROVED	
REJECTED	

**For Customer approval Only**

Qualification Status:     Full     Restricted     Rejected

Approved By	Verified By	Re-checked By	Checked By

Comments:  
\_\_\_\_\_

**Meled Electronics Co., Ltd.**

## Version change history

Rev.	Effective Date	Changed Contents	Change Reasons	Approved By
01	/	New release	/	/

## 1. Features

- Low profile
- Magnetic shielded
- SMT type, suitable for reflow soldering.



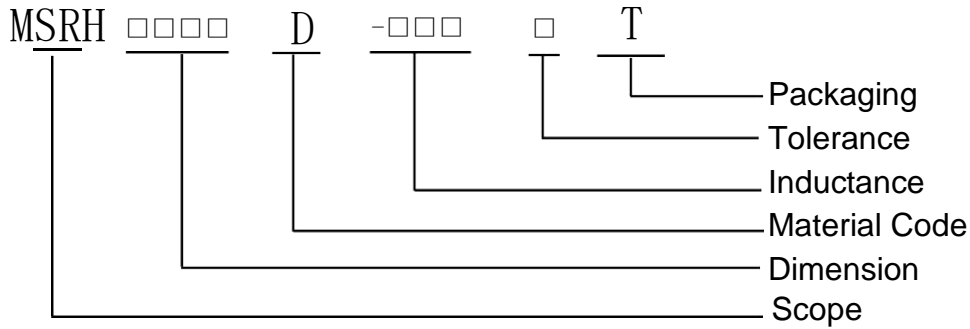
## 2. APPLICATIONS

- Portable communication equipment
- Notebook Computer
- DC/DC converters etc.

## 3. Environmental Data

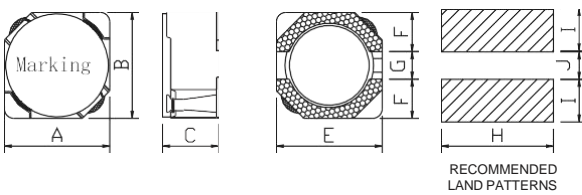
- Operating temperature range: -40°C~+100°C (including coil's self-temperature rise)
- Storage temperature range: -40°C~+100°C
- Solder reflow temperature: 260 °C peak.

## 4. PRODUCT IDENTIFICATION

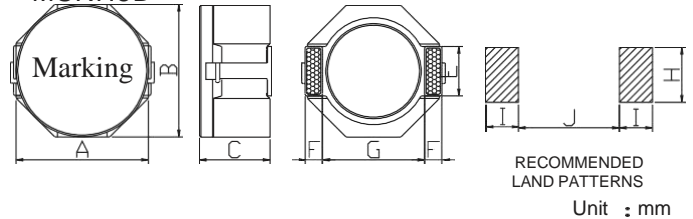


## 5. Shape and Dimensions

MSRH3D\*\*~MSRH6D\*\*



MSRH8D\*\*



Part	A	B	C	E(typ.)	F(typ.)	G(typ.)	H(typ.)	I(typ.)	H(typ.)
MSRH8D43	8.0±0.3	8.0±0.3	4.3±0.2	2.5	1.2	6.3	2.8	2.0	6.1

## IX. MSRH8D43 TYPE INDUCTORS ELECTRICAL CHARACTERISTICS & TEST CONDITIONS

Part No.	L ( $\mu$ H)	Tolerance	Test Freq.	DCR( $\Omega$ )Max	Isat(A)
MSRH8D43-1R0NT	1.0	$\pm$ 30%	100kHz	0.016	8.00
MSRH8D43-1R5NT	1.5	$\pm$ 30%	100kHz	0.017	7.85
MSRH8D43-2R2NT	2.2	$\pm$ 30%	100kHz	0.020	6.00
MSRH8D43-3R3NT	3.3	$\pm$ 30%	100kHz	0.022	5.50
MSRH8D43-4R7NT	4.7	$\pm$ 30%	100kHz	0.027	4.80
MSRH8D43-5R6NT	5.6	$\pm$ 30%	100kHz	0.029	4.60
MSRH8D43-6R8NT	6.8	$\pm$ 30%	100kHz	0.035	4.40
MSRH8D43-8R2NT	8.2	$\pm$ 30%	100kHz	0.036	4.00
MSRH8D43-100MT	10	$\pm$ 20%	100kHz	0.043	3.60
MSRH8D43-120MT	12	$\pm$ 20%	100kHz	0.064	3.10
MSRH8D43-150MT	15	$\pm$ 20%	100kHz	0.074	2.90
MSRH8D43-220MT	22	$\pm$ 20%	100kHz	0.075	2.60
MSRH8D43-270MT	27	$\pm$ 20%	100kHz	0.106	2.30
MSRH8D43-330MT	33	$\pm$ 20%	100kHz	0.152	1.90
MSRH8D43-390MT	39	$\pm$ 20%	100kHz	0.163	1.60
MSRH8D43-470MT	47	$\pm$ 20%	100kHz	0.175	1.50
MSRH8D43-560MT	56	$\pm$ 20%	100kHz	0.210	1.30
MSRH8D43-680MT	68	$\pm$ 20%	100kHz	0.280	1.20
MSRH8D43-820MT	82	$\pm$ 20%	100kHz	0.320	1.10
MSRH8D43-101MT	100	$\pm$ 20%	100kHz	0.430	1.00
MSRH8D43-121MT	120	$\pm$ 20%	100kHz	0.450	0.90
MSRH8D43-151MT	150	$\pm$ 20%	100kHz	0.505	0.80
MSRH8D43-221MT	220	$\pm$ 20%	100kHz	0.756	0.60
MSRH8D43-331MT	330	$\pm$ 20%	100kHz	1.060	0.50
MSRH8D43-471MT	470	$\pm$ 20%	100kHz	1.168	0.45
MSRH8D43-561MT	560	$\pm$ 20%	100kHz	1.610	0.40
MSRH8D43-681MT	680	$\pm$ 20%	100kHz	1.800	0.35

Isat: Saturation Current, the current when the inductance becomes 35% lower than its initial value.