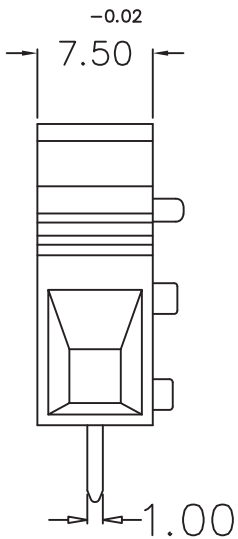
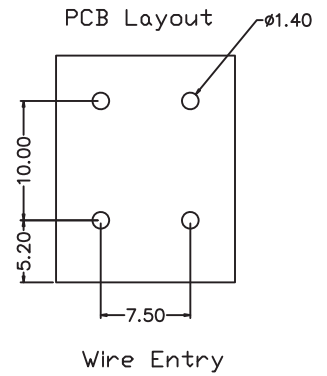
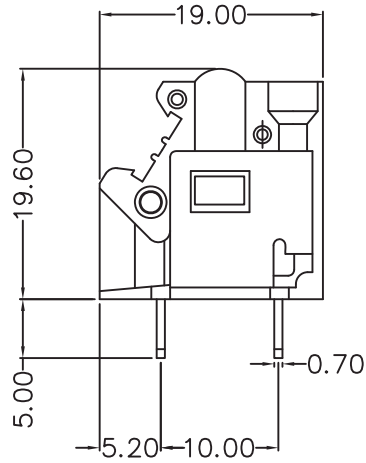


PCB Terminal Block Series PUT 2.5



DIMENSIONS



TECHNICAL SPECIFICATION

| | |
|---------------------------------|---------------------------------------|
| Current Rating | 20A |
| Voltage Rating | 600V |
| Insulation Resistance | > 1000M ohms at 500V DC |
| Dielectric Strength | >2 KV |
| Moulded Material | Engineering Thermoplastic |
| Terminal | Solid Brass alloy - Tinned |
| Pitch | 7.50 X 10.00 mm |
| Screw | MS(Zinc Plated) / Brass Nickel Plated |
| Wire size | 0.5-4.00 mm ² |
| Wire Protector | Copper alloy |
| Screw Size | M3 |
| Max. torque for terminal Screws | 0.6 Nm |

Note : (1) Flame Retardent Grade Insulator Confirming to UL 94 V-0 available on Request.
 (2) Recommended PCB hole 1.40 mm.